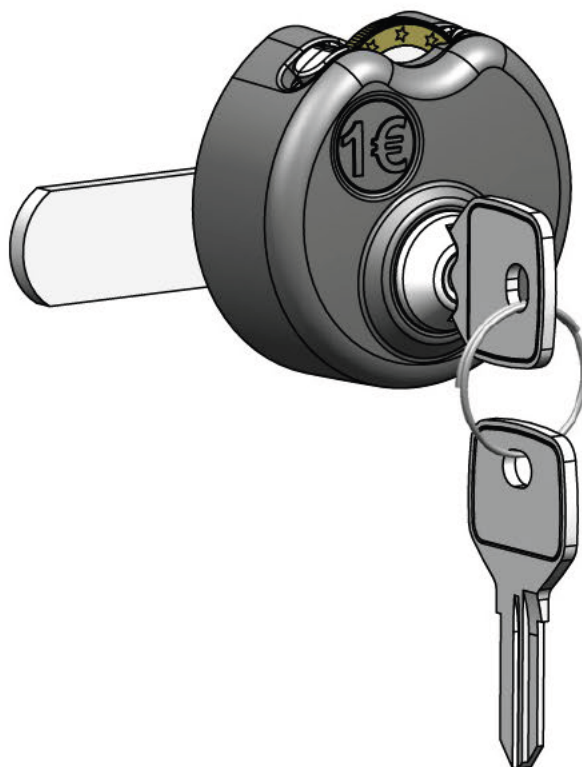


Technical Information



Coin Operated Lock 1606



Product description	2
Fitting dimensions	3
Mounting by Nut (Standard)	4
Mounting by Screws	5
Operating	6
Set / Change direction of rotation	7
Change cylinder	8
Ordering matrix cam	9
Ordering matrix lock	10

Product description / Features

- Coin operated lock, usable as cam lock
- Easy to retrofit on most lockers with 16x19mm fixing holes
- Emergency opening by master key
- Compact and robust design
- Easy and self-explaining operation
- Cylinder with key bend protection and insertion guide
- User-friendly reversible key
- Direction of rotation R/L settable
- 1.000 keyed-different cylinders
- Cylinder core exchangeable
- Lock fixing by nut (A/F 22)
- Housing made of fibreglas-reinforced plastic
- Mechanism completely made of metal

Standard Product Contents

- Coin operated lock
- 2 pcs. user keys (1. key inserted, 2. key on ring)
- Cam (mounted)
- Fixing material

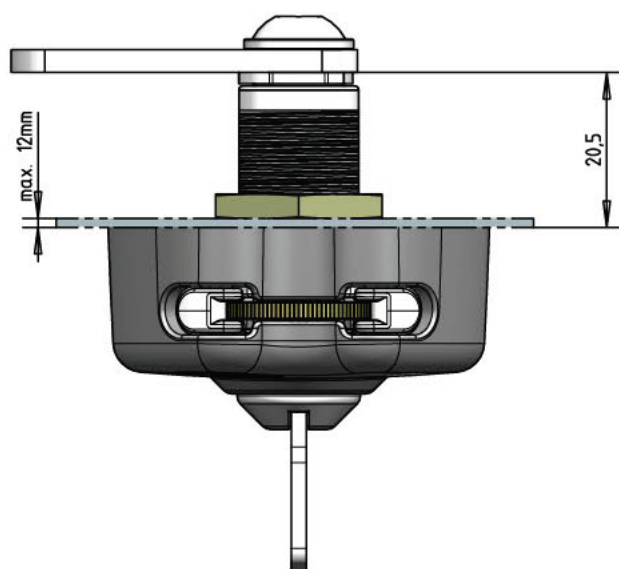
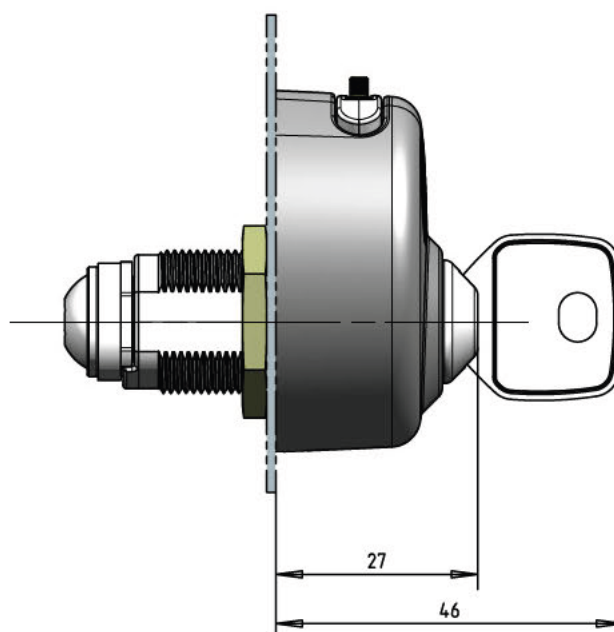
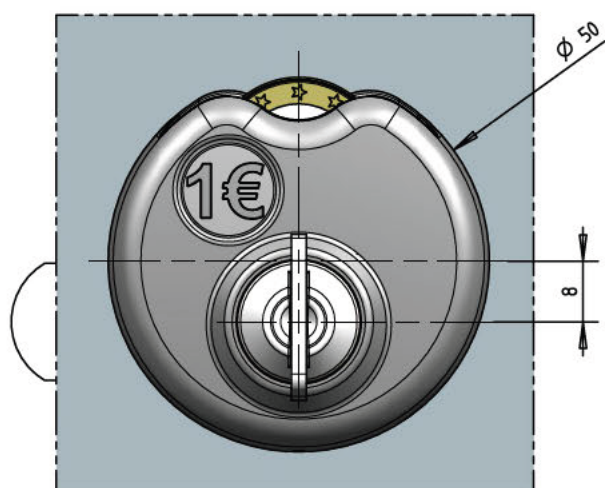
Optional Accessories (ordering separately)

- Master key
- Exchange cylinder core incl. two user keys
- Locking device (to lock and pull out the key without coin, e.g. for locker transport)

General instructions for use

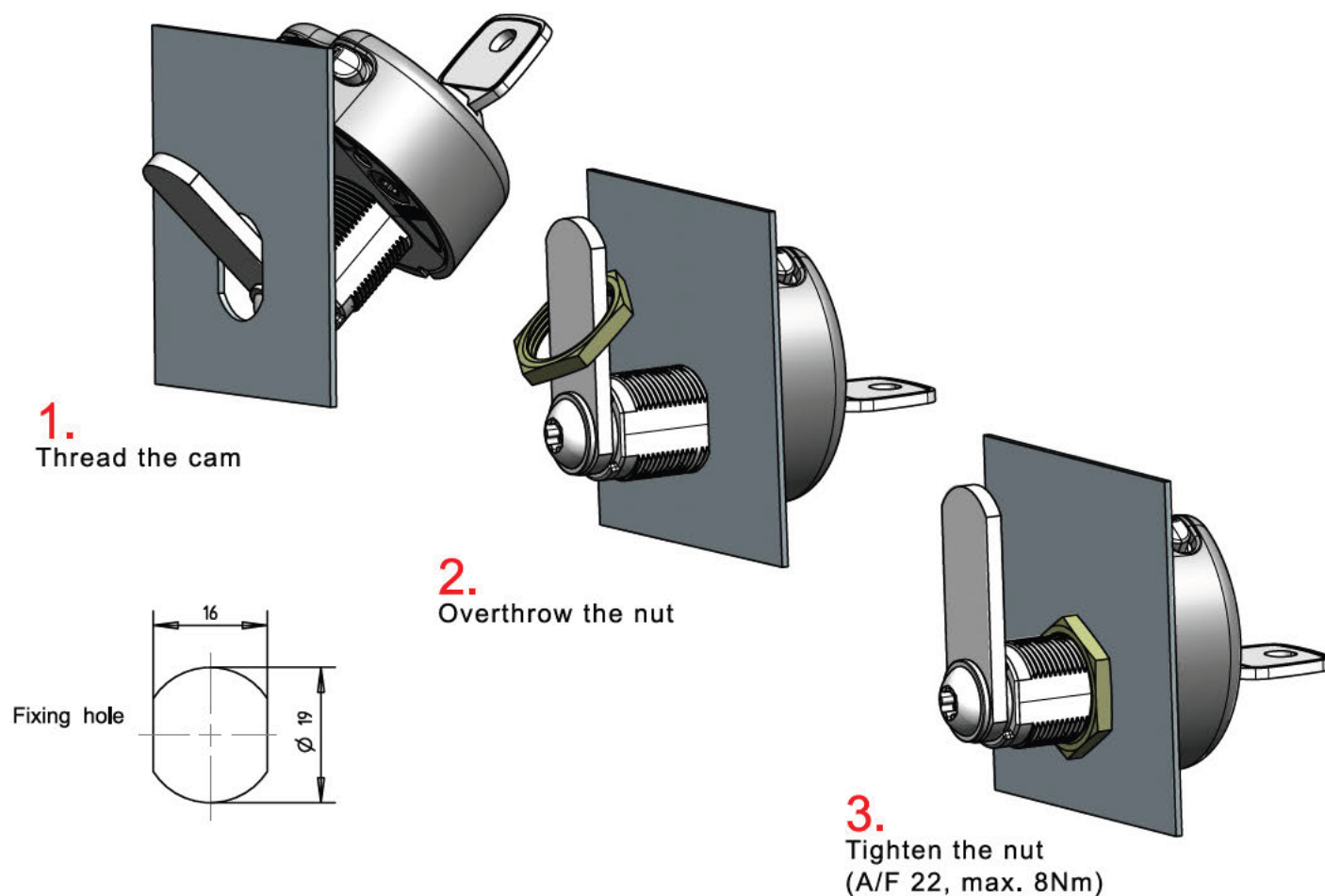
- Do not expose the lock to environmental influences like water, moist and dust.
- To use within temperature range from 0-50°C (32°F to 120°F)
- For cleaning use damp cloth and common household detergent
- Don't use aggressive or chemical products
- When cleaning avoid that water or detergent enters the lock

Fitting dimensions

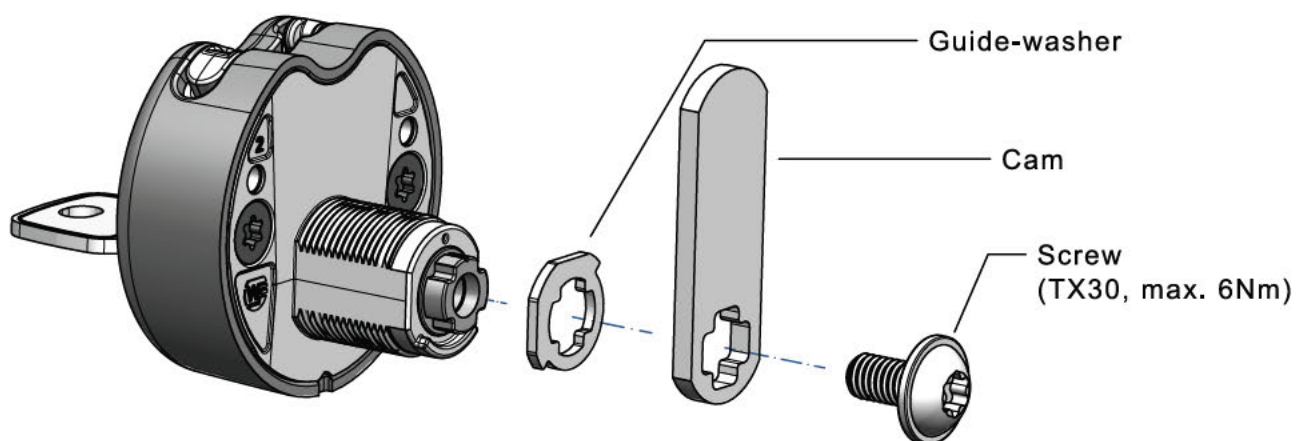


Mounting by Nut

Lock mounting with pre mounted cam (Standard)

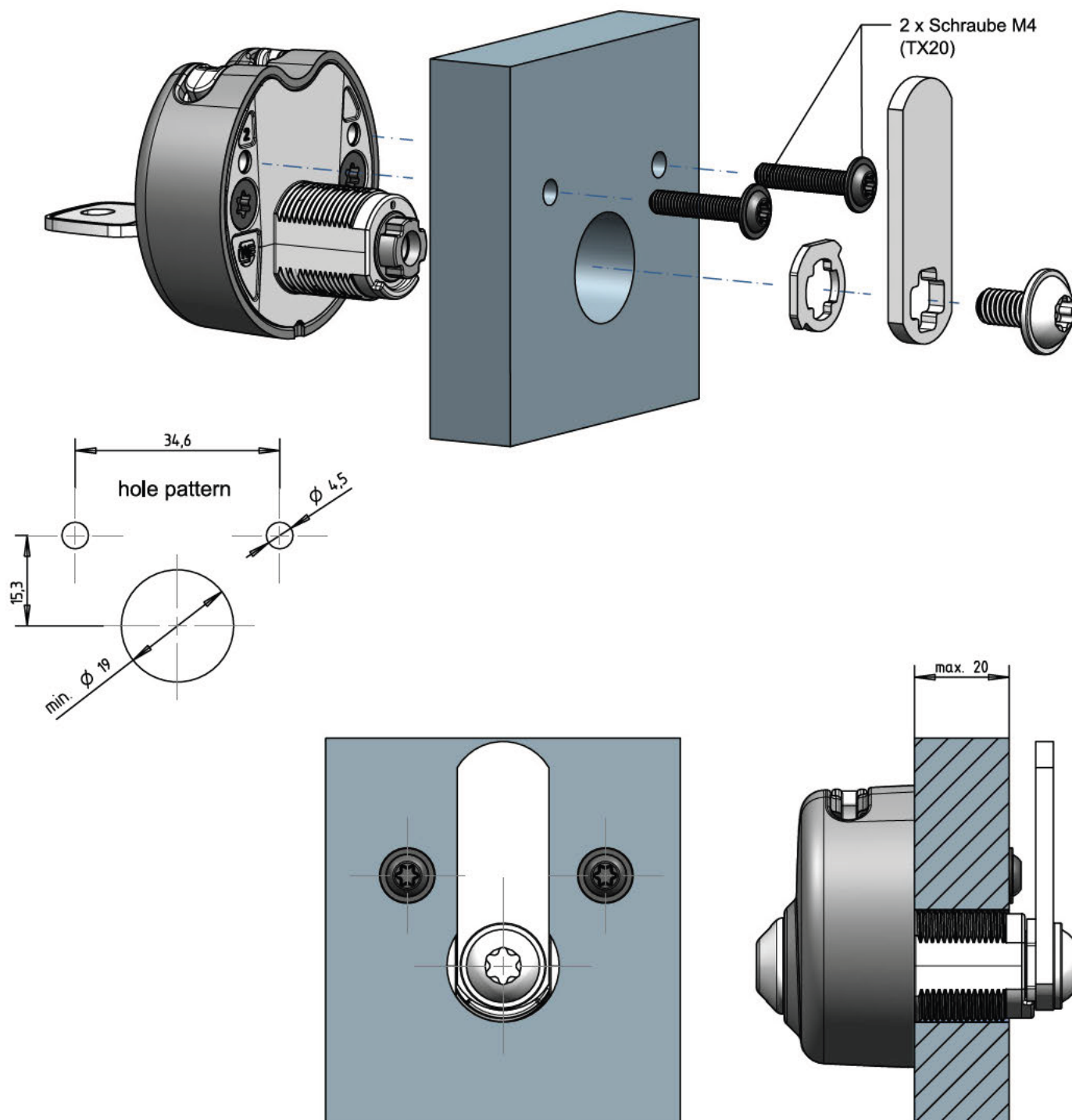


Cam mounting with using own cams



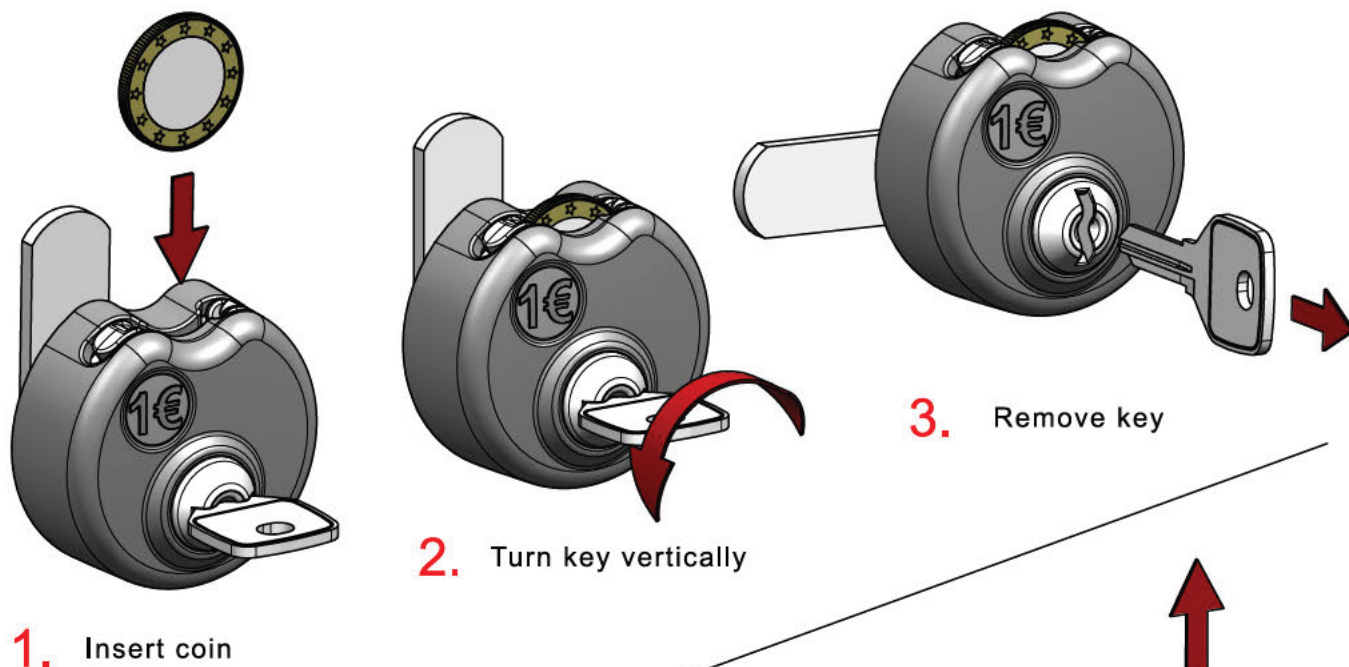
Mounting by screws

- Intended for doors without 16x19mm fixing hole and/or thicker than 12mm
- Suitable for plexiglass, laminate or wooden doors up to 20mm
- If this mounting is required, please indicate on the order (incl. door thickness)

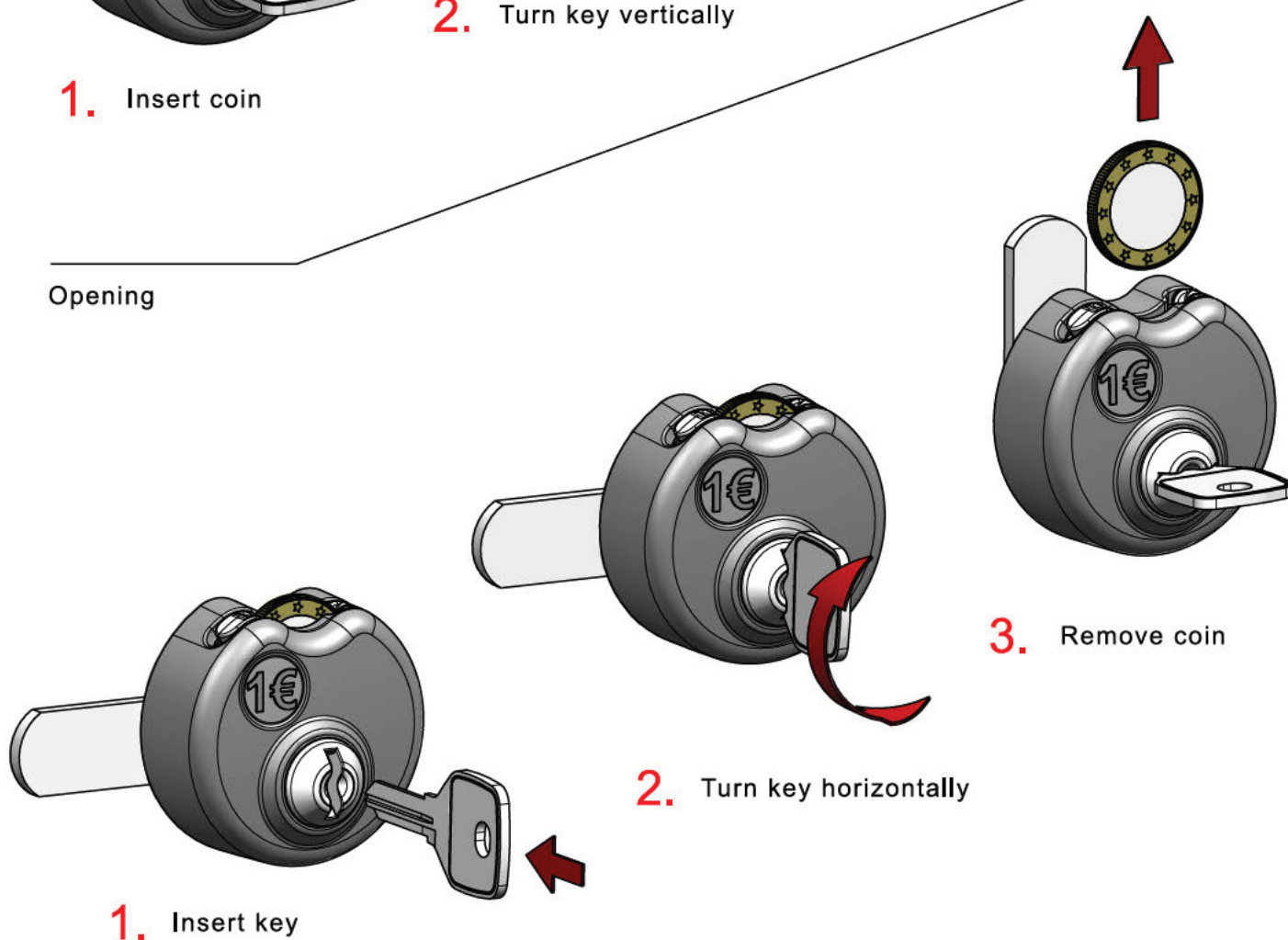


Operating

Closing

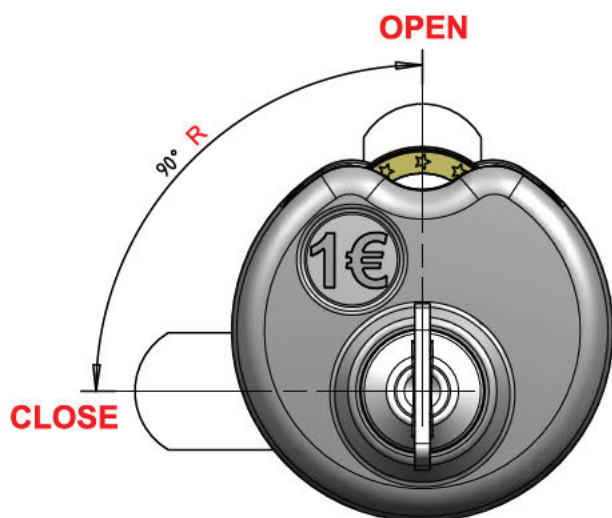
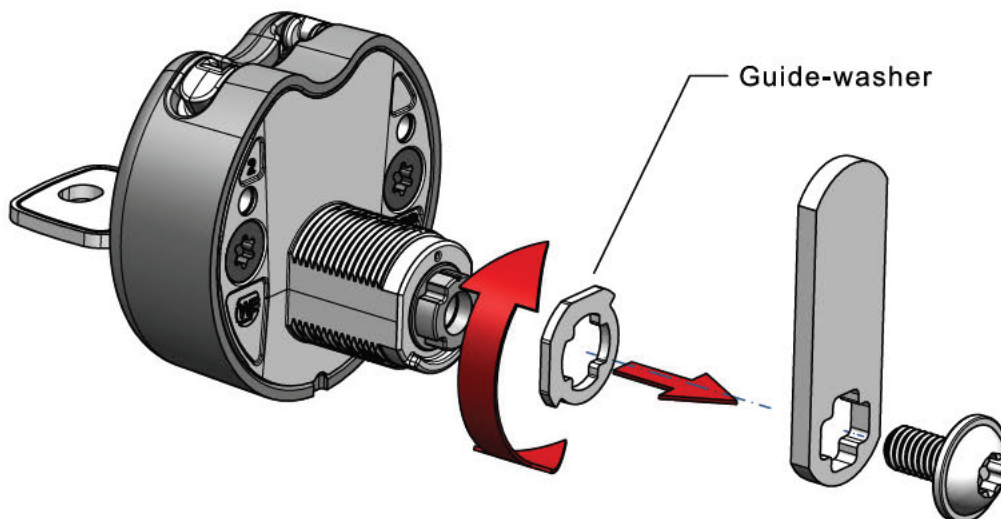


Opening

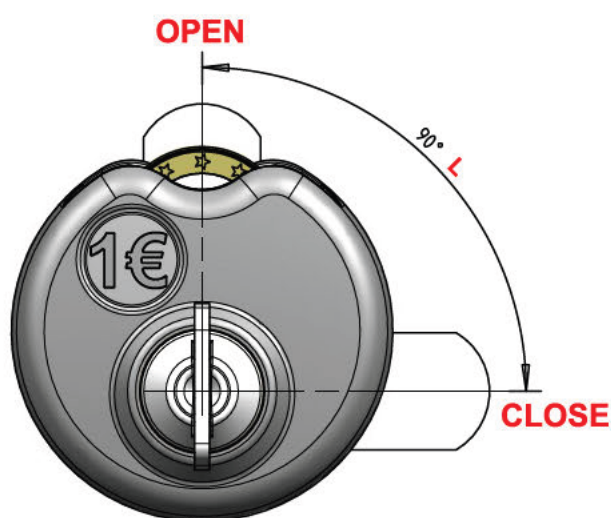


Set / Change direction of rotation

- Direction of rotation means the direction of the key to open the lock
- The direction of rotation is factory pre-set according order details
- The direction of rotation can be changed by turning the guide-washer



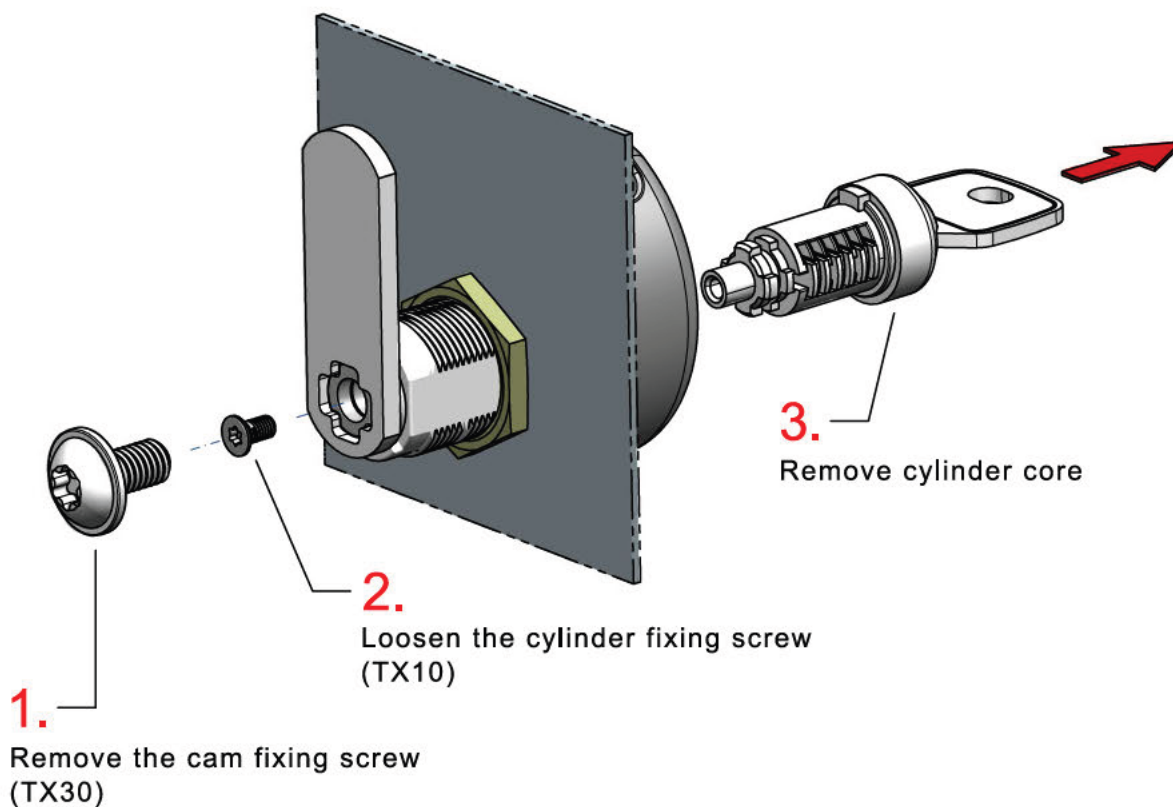
Rotation "**R**"
for right hinged doors



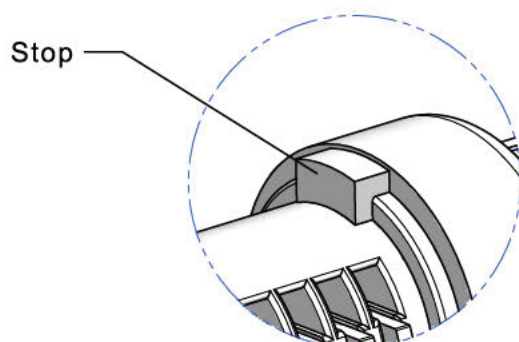
Rotation "**L**"
for left hinged doors

Change cylinder

- If required, the cylinder core can be changed (e.g. in case of lost key)
- The replacement is done with open lock, without coin and key in horizontally position

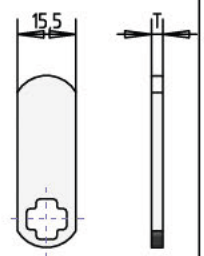


- Mounting of the new cylinder core takes place in reverse order
- When mounting make sure the stop of the core shows upwards



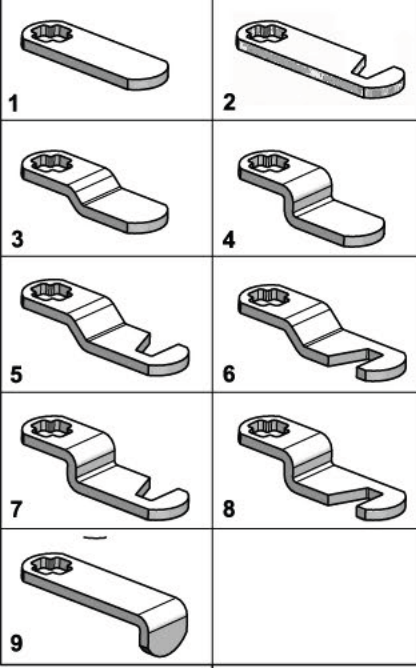
Ordering Matrix

1. Thickness "T"

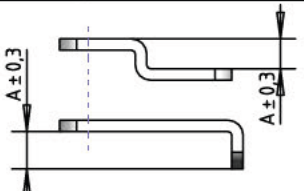


T = 2mm / 3mm

2. Shape

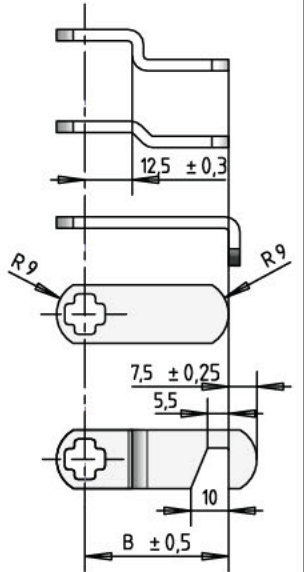


3. Height of crank "A"



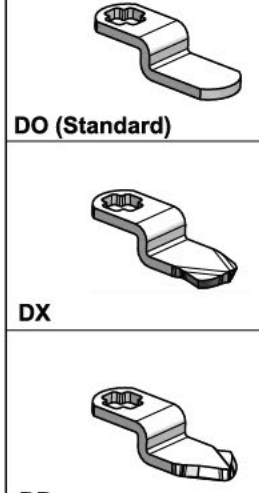
A	mm	for shape
00	0	-1-2-
03	1,2	-3-5-6-
04	1,6	-3-5-6-
05	2,0	-3-5-6-
06	2,4	-3-5-6-
07	2,8	-3-5-6-
08	3,2	-3-5-6-
10	4,0	-3-5-6-
12	4,8	-3-4-5-6-7-8-
14	5,6	-3-4-5-6-7-8-
16	6,4	-4-7-8-9-
20	7,9	-4-7-8-9-
21	8,3	-3-5-6-
25	9,9	-3-4-5-6-7-8-9-
28	11,1	-4-7-8-9-
32	12,7	-3-4-5-6-7-8-9-
34	13,5	-4-7-8-9-
38	15,0	-4-7-8-9-
40	15,9	-4-7-8-9-
44	17,5	-4-7-8-9-
48	19,1	-4-7-8-9-
50	19,9	-4-7-8-9-
64	25,4	-4-7-8-9-
72	28,6	-4-7-8-9-

4. Length "B"

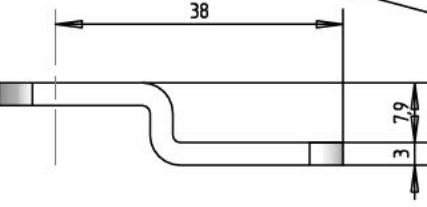


-Length in 1mm steps
(stretched length max. 100mm)

5. End of cam

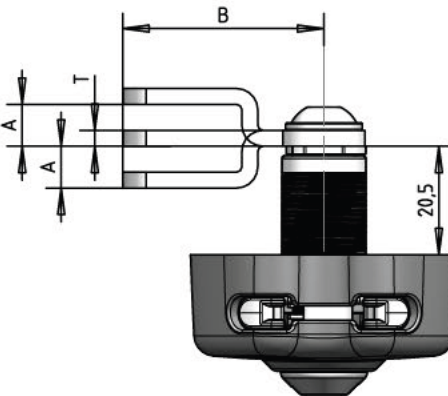


DO (Standard)
DX
DB



order example cam:

C1606-3-4-20-38-DO

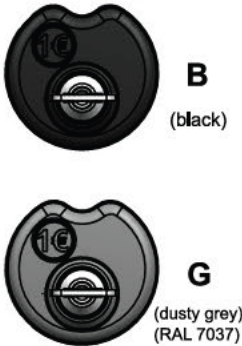


Revision: 28.11.2019 / Technical changes reserved / All data without warranty / © RJ Locks

Ordering Matrix Lock

Always needed specification


1. Colour



B
(black)


G
(dusty grey)
(RAL 7037)

2. Coin



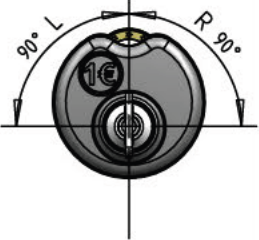
1 Euro	EU
100 Hungarian Forint	FT
1 Swiss Franc	SF
5 Polish Zloty	ZL
1 British Pound	BP
10 Czech Koruna	KC
1 Bulgarian Lev	LV

3. Master lock system

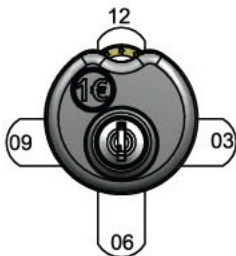


A
B
C
D

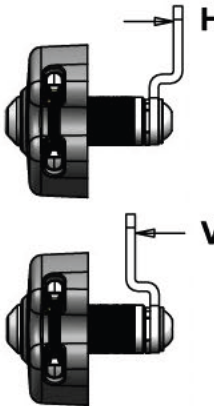
4. Direction of rotation
(Direction of key to open the lock)
R: for right hinged doors
L: for left hinged doors



4. Cam position
(View from front when locked)




5. Crank direction
(If cranked)



Order example for a coin lock in black,
for 1 Euro coins,
master lock system A,
for right hinged doors,
with cranked cam:

L1606 - B - EU - A - R - 09 - H



Order example for a master key,
matching the lock above:

S1606- A

Revision: 28.11.2019 / Technical changes reserved / All data without warranty / © RJ Locks

- 10 -